

CHM PERFORMANCE WITH 4-POLE MOTORS – 1400 REVS. INPUT

TYPE	i=ratio	n2 r/min	Kw=P1	Nm=T2	f.s.
	7.5	186.7	0.22	9	2.1
	10	140.0	0.22	11	1.6
	15	93.3	0.22	16	1.0
	20	70.0	0.22	20	0.9
CHM 030	25	56.0	0.18	20	1.0
	30	46.7	0.18	22	0.9
	40	35.0	0.18	21	0.8
	50	28.0	0.18	19	0.8
	60	23.3	0.09	18	0.9
	80	17.5	0.09	13	0.9

TYPE	i=ratio	n2 r/min	Kw=P1	Nm=T2	f.s.
	7.5	186.7	4.00	180	1.0
	10	140.0	4.00	237	0.8
	15	93.3	3.00	260	0.8
	20	70.0	1.50	167	1.2
CHM 075	25	56.0	1.50	204	1.0
	30	46.7	1.50	232	1.0
	40	35.0	1.10	214	1.0
	50	28.0	0.75	176	1.2
	60	23.3	0.75	199	1.0
	80	17.5	0.55	178	1.1
	100	14.0	0.55	203	0.9

TYPE	i=ratio	n2 r/min	Kw=P1	Nm=T2	f.s.
	7.5	186.7	0.55*	22	1.6
	10	140.0	0.55*	30	1.4
	15	93.3	0.55*	44	0.9
	20	70.0	0.55*	38	1.0
CHM 040	25	56.0	0.37	45	0.9
	30	46.7	0.37	52	0.8
	40	35.0	0.25	43	0.9
	50	28.0	0.22	44	0.9
	60	23.3	0.18	42	0.8
	80	17.5	0.18	36	0.8
	100	14.0	0.18	35	0.8

TYPE	i=ratio	n2 r/min	Kw=P1	Nm=T2	f.s.
	7.5	186.7	4.00	184	1.5
	10	140.0	4.00	242	1.3
	15	93.3	4.00	351	1.1
	20	70.0	4.00	456	0.8
CHM 090	25	56.0	3.00	417	0.8
	30	46.7	3.00	478	0.9
	40	35.0	1.50	306	1.2
	50	28.0	1.50	367	1.0
	60	23.3	1.50	421	0.8
	80	17.5	0.75	257	1.1
	100	14.0	0.75	300	0.9

TYPE	i=ratio	n2 r/min	Kw=P1	Nm=T2	f.s.
	7.5	186.7	0.75	33.3	2.0
	10	140.0	0.75	43.9	1.6
	15	93.3	0.75	62.6	1.2
	20	70.0	0.75	80	0.9
CHM 050	25	56.0	0.55	70	1.0
	30	46.7	0.55	80	1.0
	40	35.0	0.37	67	1.1
	50	28.0	0.37	78	0.9
	60	23.3	0.37	87	0.8
	80	17.5	0.25	70	0.9
	100	14.0	0.18	59	0.9

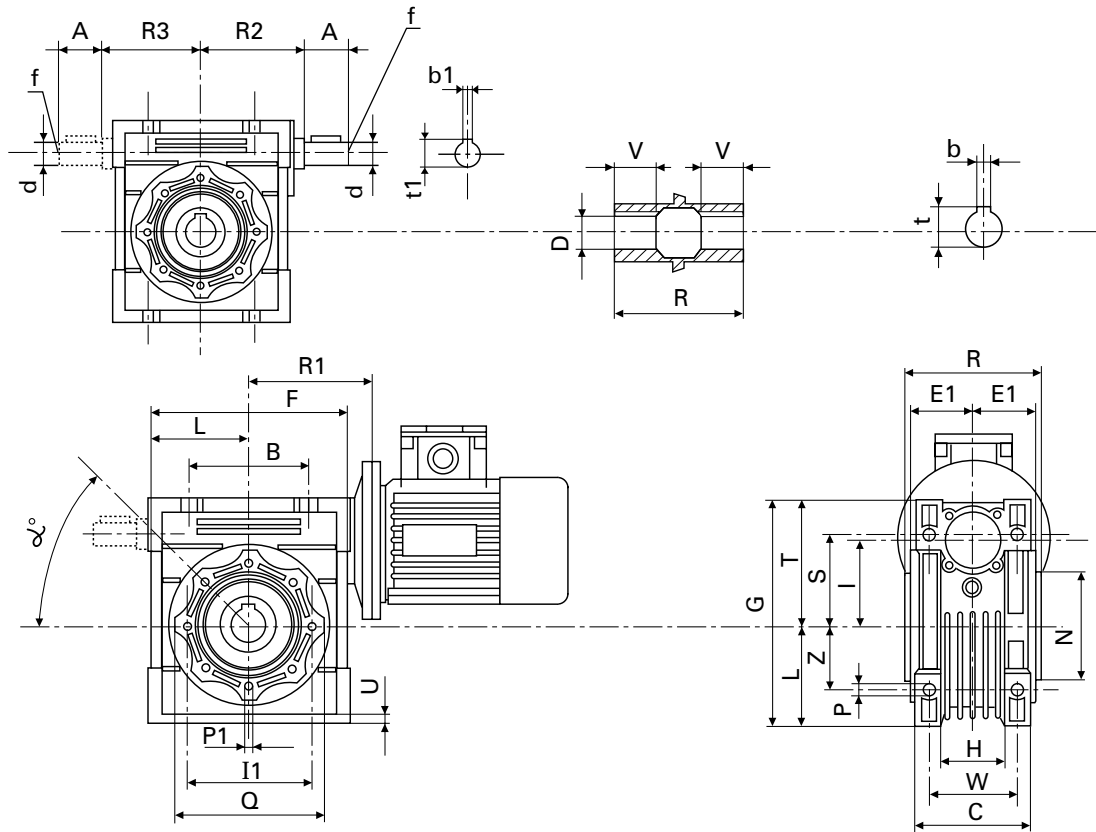
TYPE	i=ratio	n2 r/min	Kw=P1	Nm=T2	f.s.
	7.5	186.7	7.50	344	1.6
	10	140.0	7.50	453	1.3
	15	93.3	7.50	659	1.0
	20	70.0	5.50	635	1.0
CHM 110	25	56.0	4.00	573	1.2
	30	46.7	4.00	645	1.1
	40	35.0	3.00	636	1.1
	50	28.0	3.00	764	0.9
	60	23.3	2.20	645	1.0
	80	17.5	1.50	546	0.9
	100	14.0	1.10	470	1.0

TYPE	i=ratio	n2 r/min	Kw=P1	Nm=T2	f.s.
	7.5	186.7	1.50	67.4	1.8
	10	140.0	1.50	88.6	1.4
	15	93.3	1.50	126	1.1
	20	70.0	1.50	164	0.8
CHM 063	25	56.0	1.10	145	0.9
	30	46.7	1.10	165	1.0
	40	35.0	0.75	143	1.0
	50	28.0	0.55	122	1.1
	60	23.3	0.55	138	0.9
	80	17.5	0.37	114	1.1
	100	14.0	0.37	127	0.9

TYPE	i=ratio	n2 r/min	Kw=P1	Nm=T2	f.s.
	7.5	186.7	7.50	348	2.2
	10	140.0	7.50	455	1.8
	15	93.3	7.50	660	1.2
	20	70.0	7.50	877	1.0
CHM 130	25	56.0	7.50	1071	0.9
	30	46.7	7.50	1225	0.8
	40	35.0	5.50	1173	0.9
	50	28.0	4.00	1023	0.9
	60	23.3	3.00	886	1.1
	80	17.5	3.00	1112	0.8
	100	14.0	1.50	652	1.1

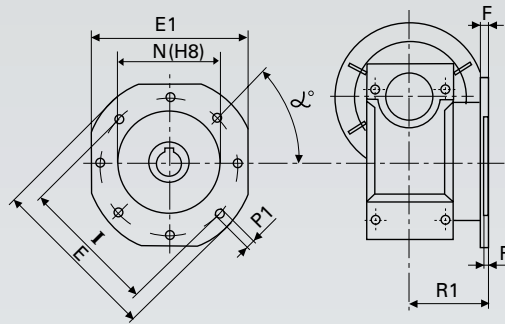
It is also possible to couple motors that are less powerful than those shown in the table. It is possible to couple 2800 or 900 rev. motors by adapting the power and verifying the application. For any clarification, please contact our technical office.

CHM - CHMR - CHME - CHMRE 030 ÷ 130 DIMENSIONS



	B	A	F	D(H7)	d(j6)	G	H	R1	R	R2	R3	L	I	C	I1	N(h8)	E1	P	Q
030	54	20	80	14	9	97	32	55	63	51	45	40	30	56	65	55	29	6.5	75
040	70	23	100	18	11	121.5	43	70	78	60	53	50	40	71	75	60	36.5	6.5	87
050	80	30	120	25	14	144	49	80	92	74	64	60	50	85	85	70	43.5	8.5	100
063	100	40	144	25	19	174	67	95	112	90	75	72	63	103	95	80	53	8.5	110
075	120	50	172	28	24	205	72	112.5	120	105	90	86	75	112	115	95	57	11	140
090	140	50	208	35	24	238	74	129.5	140	125	108	103	90	130	130	110	67	13	160
110	170	60	252.5	42	28	295	-	160	155	142	135	127.5	110	144	165	130	74	14	200
130	200	80	292.5	45	30	335	-	180	170	162	155	147.5	130	155	215	180	81	16	250

	S	T	U	V	Z	W	P1	α	b	b1	f	t	t1	Weight in kg. excluding motor
030	44	57	5.5	21	27	44	M6x11(n.4)	0°	5	3	-	16.3	10.2	1.2
040	55	71.5	6.5	26	35	60	M6x8(n.4)	45°	6	4	-	20.8	12.5	2.3
050	64	84	7	30	40	70	M8x10(n.4)	45°	8	5	M6	28.3	16.0	3.5
063	80	102	8	36	50	85	M8x14(n.4)	45°	8	6	M6	28.3	21.5	6.2
075	93	119	10	40	60	90	M8x14(n.4)	45°	8	8	M8	31.3	27.0	8.5
090	102	135	11	45	70	100	M10x18(n.4)	45°	10	8	M8	38.3	27.0	12
110	125	167.5	14	50	85	115	M10x18(n.4)	45°	12	8	M10	45.3	31.0	35
130	140	187.5	15	60	100	120	M12x21(n.4)	45°	14	8	M10	48.8	33.0	53



		030	040	050	063	075	090	110	130
FA	R1	54.5	67	90	82	111	111	131	140
	F	6	7	9	10	13	13	15	15
	R	4	4	5	6	6	6	6	6
	N	50	60	70	115	130	152	170	180
	I	68/72*	75/95*	85/110*	150/165*	165/185*	175/195*	230	255
	P1	6.5(n°4)	9(n°4)	11(n°4)	11(n°4)	14(n°4)	14(n°4)	14(n°8)	16(n°8)
	E	80	110	125	180	200	210	280	320
	E1	70	95	110	142	170	200	260	290
	α°	45°	45°	45°	45°	45°	45°	45°	22.5°
FB	R1	-	97	120	112	90	122	180	-
	F	-	7	9	10	13	18	15	-
	R	-	4	5	6	6	6	6	-
	N	-	60	70	115	110	180	170	-
	I	-	75/95*	85/110*	150/165*	130/145*	215/230*	230	-
	P1	-	9(n°4)	11(n°4)	11(n°4)	14(n°4)	14(n°4)	14(n°8)	-
	E	-	110	125	180	160	250	280	-
	E1	-	95	110	142	-	-	260	-
	α°	-	45°	45°	45°	45°	45°	45°	-
FC	R1	-	80	89	98	-	110	-	-
	F	-	9	10	10	-	17	-	-
	R	-	5	5	5	-	6	-	-
	N	-	95	110	130	-	130	-	-
	I	-	115	130	165	-	165/185*	-	-
	P1	-	9.5(n°4)	9.5(n°4)	11(n°4)	-	11(n°4)	-	-
	E	-	140	160	200	-	200	-	-
	α°	-	45°	45°	45°	-	45°	-	-
	FD	R1	-	58	72	107	-	151	-
F		-	12	14.5	10	-	13	-	-
R		-	5	5	5	-	6	-	-
N		-	80	95	130	-	152	-	-
I		-	100/110*	115/125*	165	-	175/195*	-	-
P1		-	9(n°4)	11(n°4)	11(n°4)	-	14(n°4)	-	-
E		-	120	140	200	-	210	-	-
α°		-	45°	45°	45°	-	45°	-	-
FE		R1	-	-	-	80.5	-	-	-
	F	-	-	-	16.5	-	-	-	-
	R	-	-	-	5	-	-	-	-
	N	-	-	-	110	-	-	-	-
	I	-	-	-	130/145*	-	-	-	-
	P1	-	-	-	11(n°4)	-	-	-	-
	E	-	-	-	160	-	-	-	-
	α°	-	-	-	45°	-	-	-	-

* The values marked have a slot instead of a hole, therefore the fixing centreline, value, may be within the range indicated, an intermediate value is recommended.